

Planning with your Native Neighbors: avoiding the pitfalls of split jurisdiction

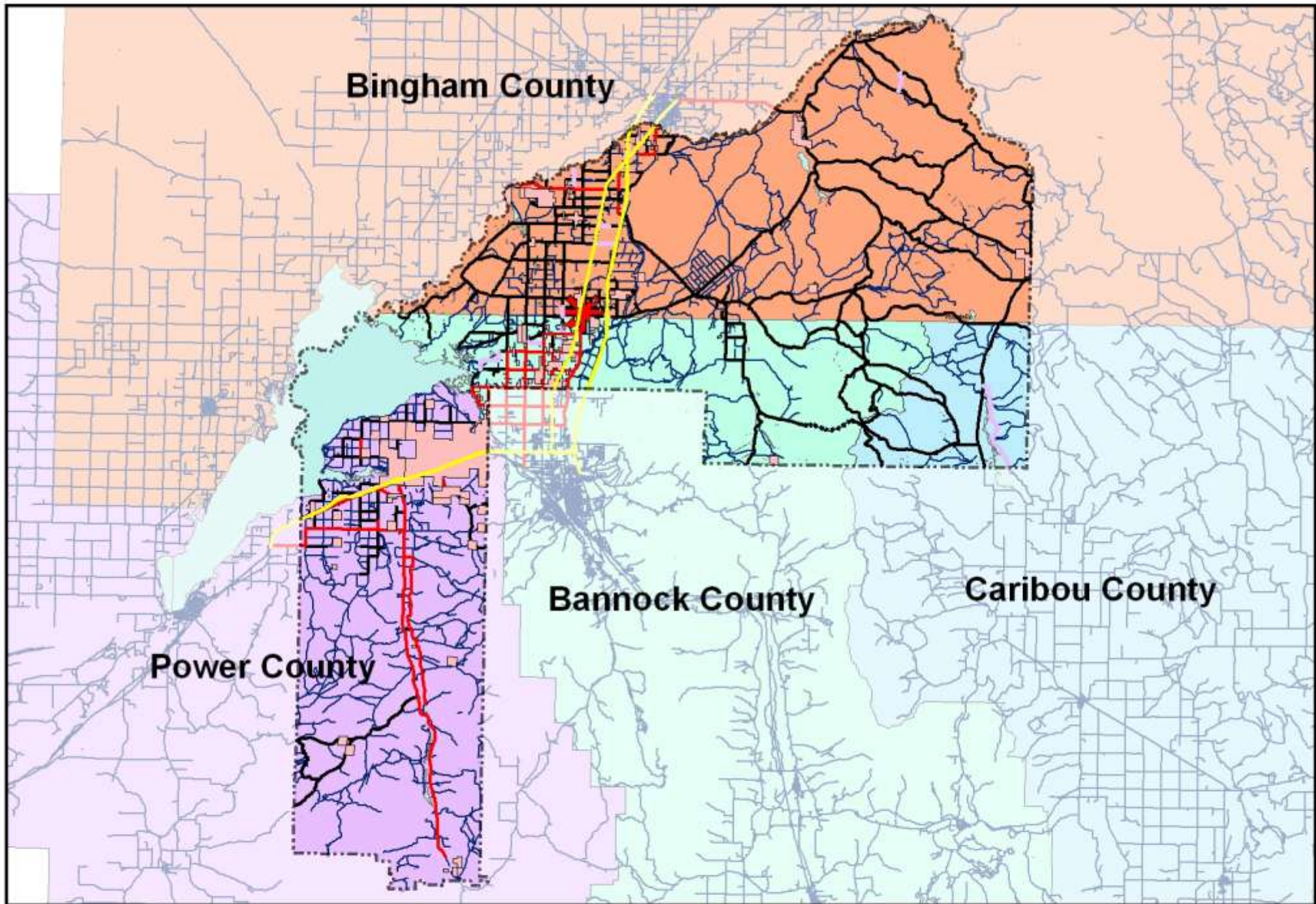
Darrell Shay, Economic Development Specialist Shoshone-Bannock Tribal Planning Department

Emma George, Planner I, Shoshone-Bannock Tribal Planning Department

Jon Norstog, Planning Director, Shoshone-Bannock Tribal Planning Department

Mark Echohawk, Echohawk law firm, Pocatello ID

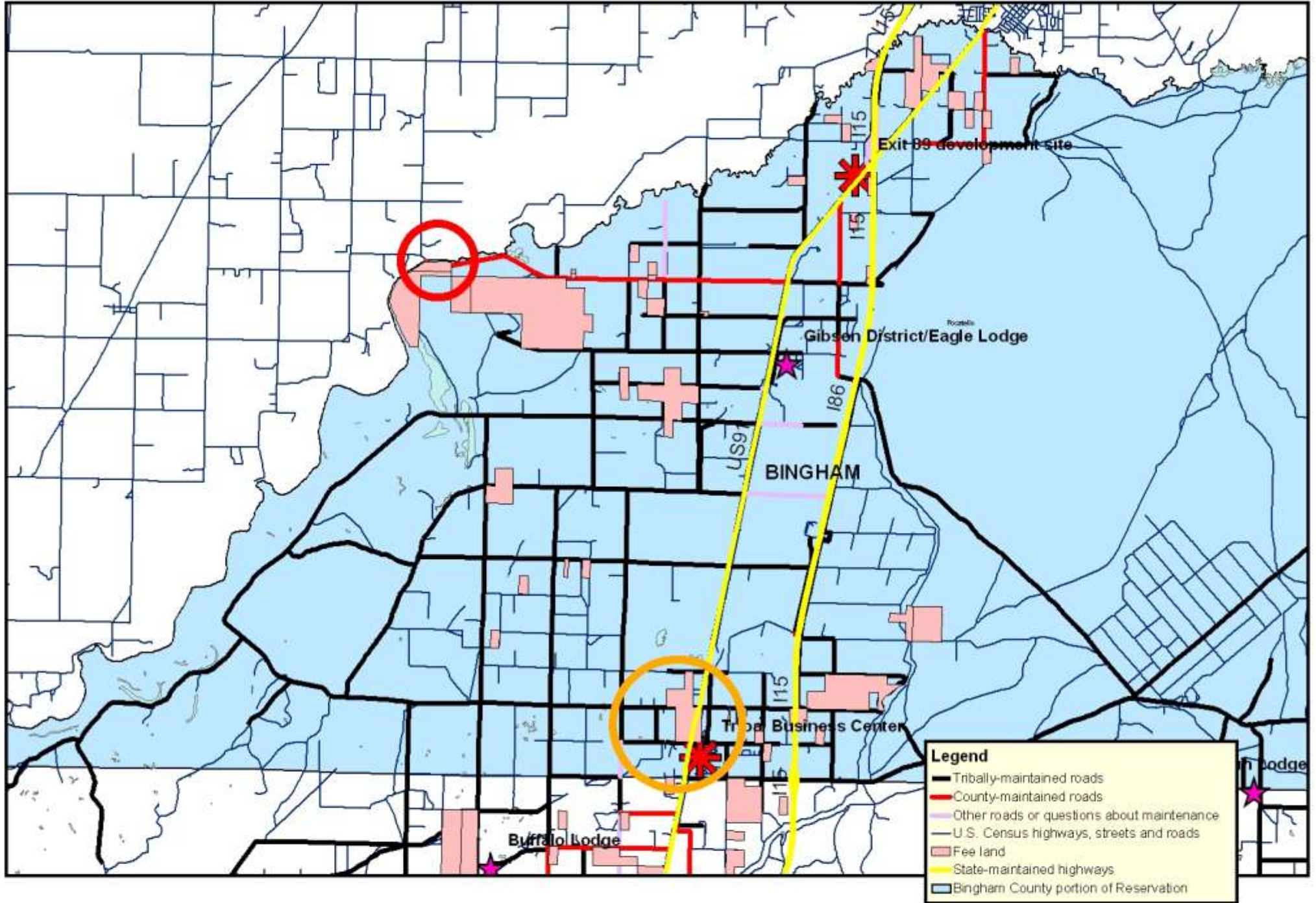
Melodie Halstead, Zoning Administrator, Bingham County ID



THE SHOSHONE - BANNOCK TRIBES: FORT HALL INDIAN RESERVATION

Showing County Boundaries and Overlapping Jurisdictional Claims

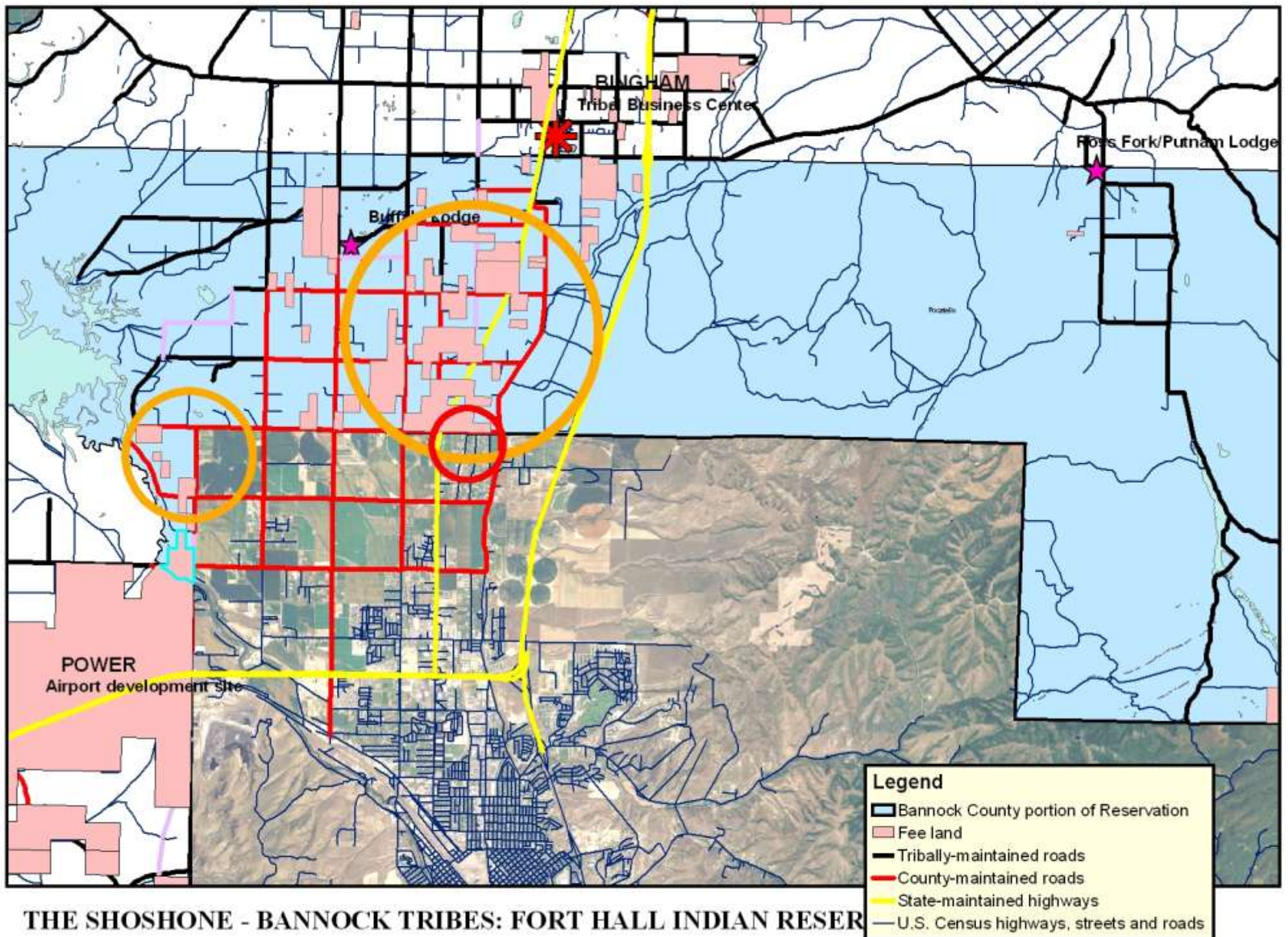
Prepared by Shoshone - Bannock Tribes Planning Department, May, 2007

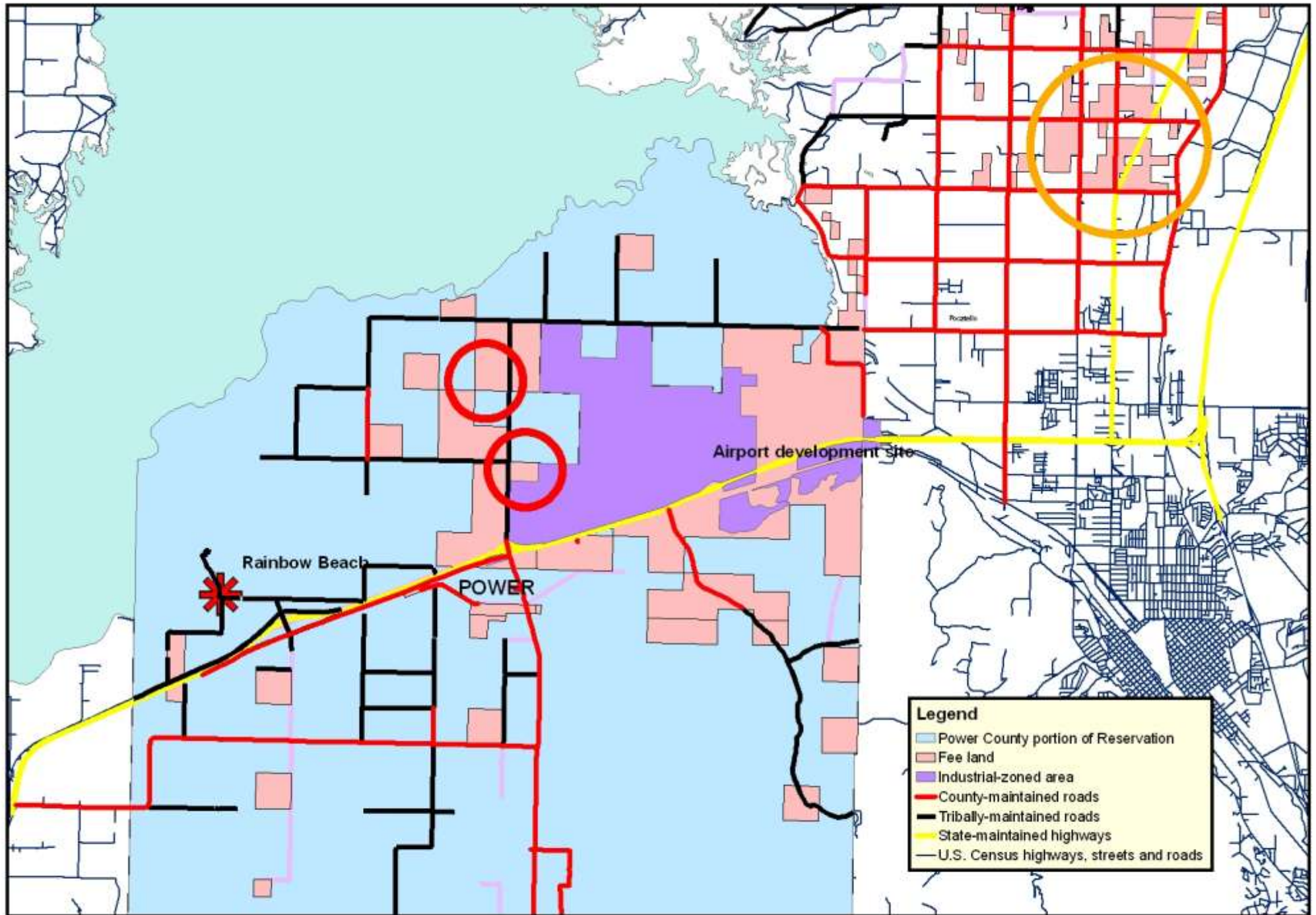


THE SHOSHONE - BANNOCK TRIBES: FORT HALL INDIAN RESERVATION

Bingham County Portion, Showing Fee Lands and Roads and Highways by Tribal, State or County (P.L. 280) Jurisdiction

Prepared by Shoshone - Bannock Tribes Planning Department, May, 2007

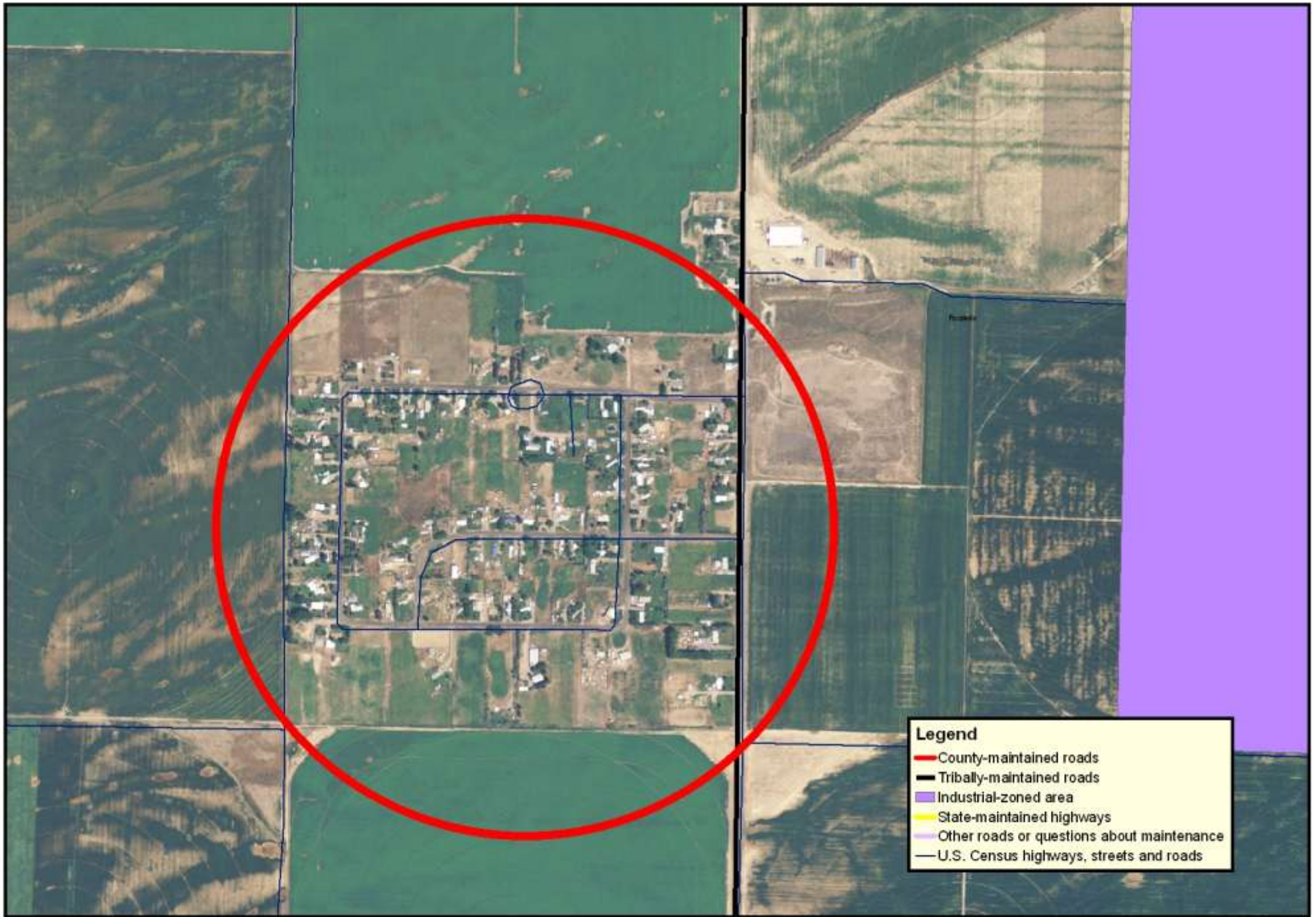




THE SHOSHONE - BANNOCK TRIBES: FORT HALL INDIAN RESERVATION

Power County Portion, Showing Fee Lands and Roads and Highways by Tribal, State or County (P.L. 280) Jurisdiction

Prepared by Shoshone - Bannock Tribes Planning Department, May, 2007



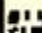
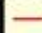

THE SHOSHONE - BANNOCK TRIBES: FORT HALL INDIAN RESERVATION

Power County Portion, Showing earlier county-permitted subdivision

Prepared by Shoshone - Bannock Tribes Planning Department, May, 2007



Legend

-  Reservation Boundary
-  County-maintained roads
-  Tribally-maintained roads

THE SHOSHONE - BANNOCK TRIBES: FORT HALL INDIAN RESER

Development Hot Spots along the Reservation Boundary

Prepared by Shoshone - Bannock Tribes Planning Department, May, 2009









