

An aerial, black and white photograph of a town in a valley. The town is spread out across the middle ground, with various buildings, streets, and some larger structures. In the foreground, there are fields and some smaller buildings. The background features a range of mountains with some snow or light-colored patches. The overall scene is a wide, open landscape.

# Oneida County Historic Preservation Plan

**Idaho's Heritage: Preparing Historic Preservation Plans  
American Planning Association, Idaho Chapter  
2021 Conference**



# Oneida County Historic Preservation Plan

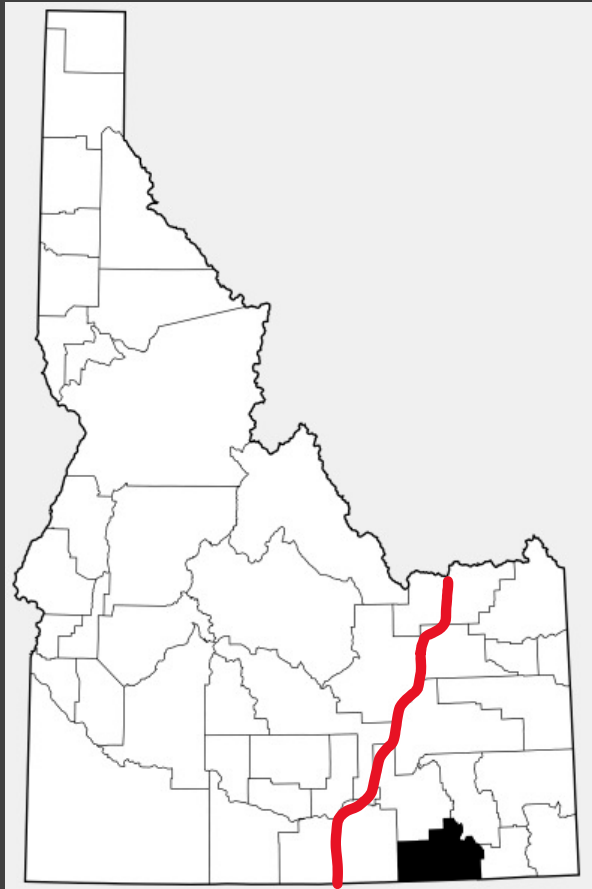
- Oneida County adopted a Historic Preservation Code in March 2019
- Assembled a Historic Preservation Committee
  - Chair, Jean Thomas
  - County Commissioner Bill Lewis is member/liaison
- Obtained a CLG grant from the Idaho SHPO



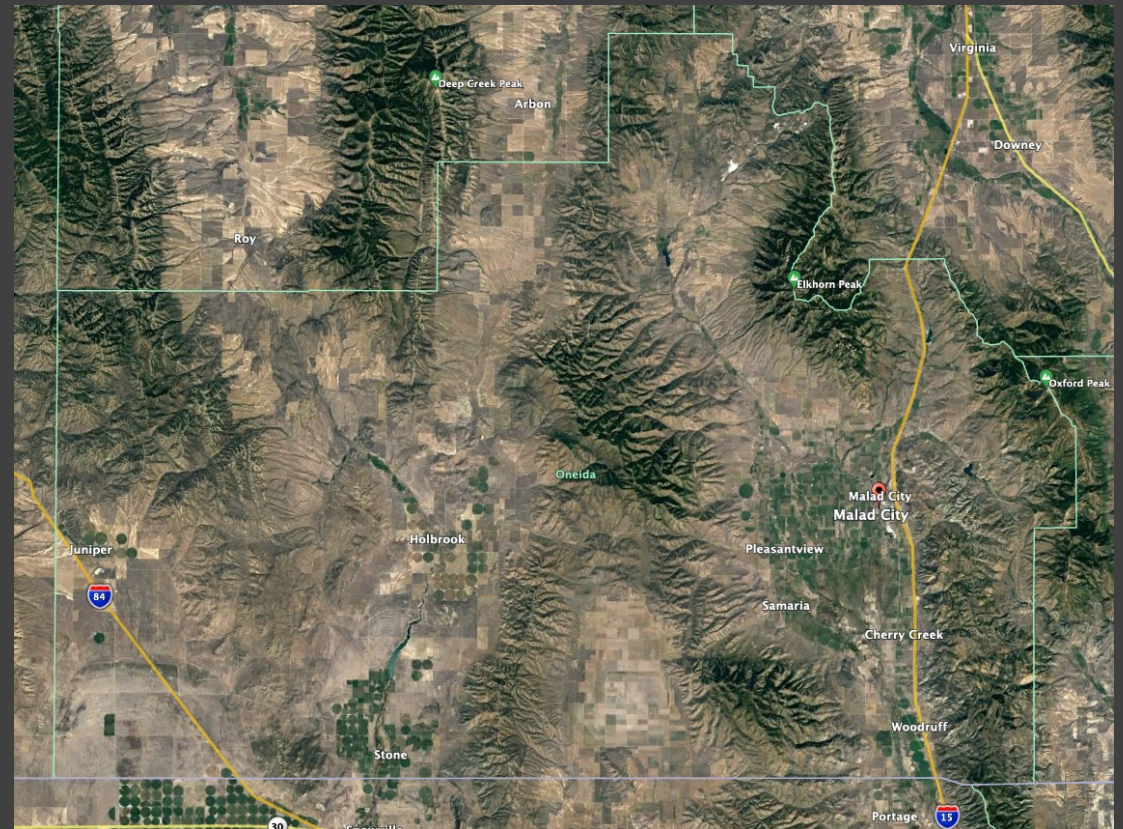
Main and Bannock Streets, Malad City, 1915

# Oneida County Historic Preservation Plan

- Where is Oneida County?



- County Population: 4,385 (2019)
- Malad City Population: 2,081 (2019)



# Oneida County Historic Preservation Plan

## FUNDING

- CLG Grant from Idaho SHPO
  - \$12,000
- Local Funds
  - \$1,000 from Oneida County Relic Preservation and Historical Society

TOTAL \$13,000

- Additional Local Contribution
  - \$5,000 from Oneida County Historic Preservation Committee in volunteer time



Samaria, Oneida County, Listed on the NRHP in 1979



# Oneida County Historic Preservation Plan

## TIMELINE

- February – Hired consultant
- March – Initial meeting
- April-June – Public input/OCHPC discussions
- July-August – Research/drafting
- Sept. 30 – Project deadline
- Oct. 12 – County Commission meeting



Oneida County Courthouse, constructed 1939; WPA project; Architect: Sundberg & Sundberg, Idaho Falls; NRHP 1987

# Oneida County Historic Preservation Plan

## SCOPE AND BROAD FOCUS

- Identify priorities and where to start
- Identify a common vision for Oneida County's history
- Pave the way to future grants
- Get public input
  - Surveys had 41% response rate
- Raise public awareness

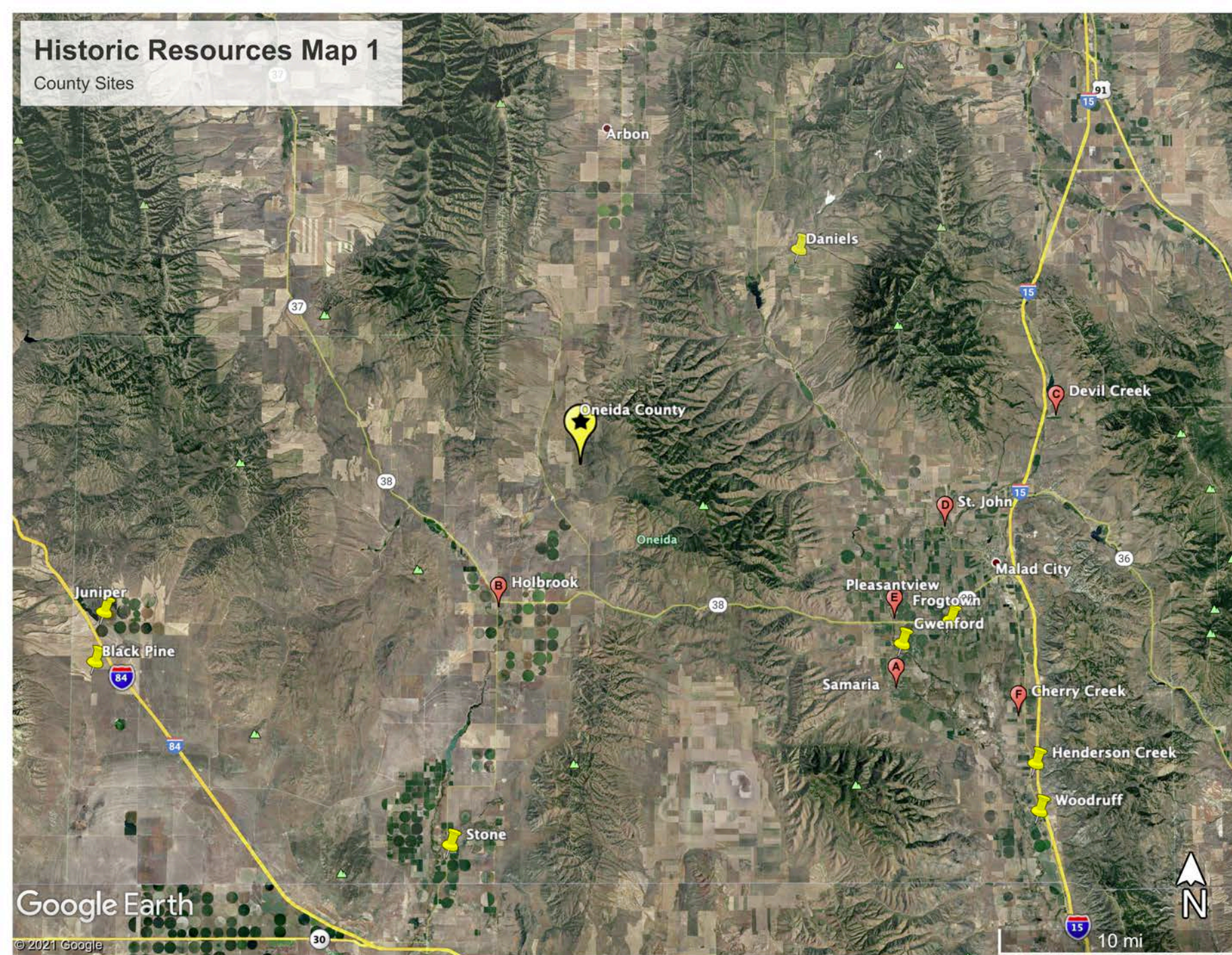


John "Sawdust" Williams Barns near Malad City



# Historic Resources Map 1

County Sites

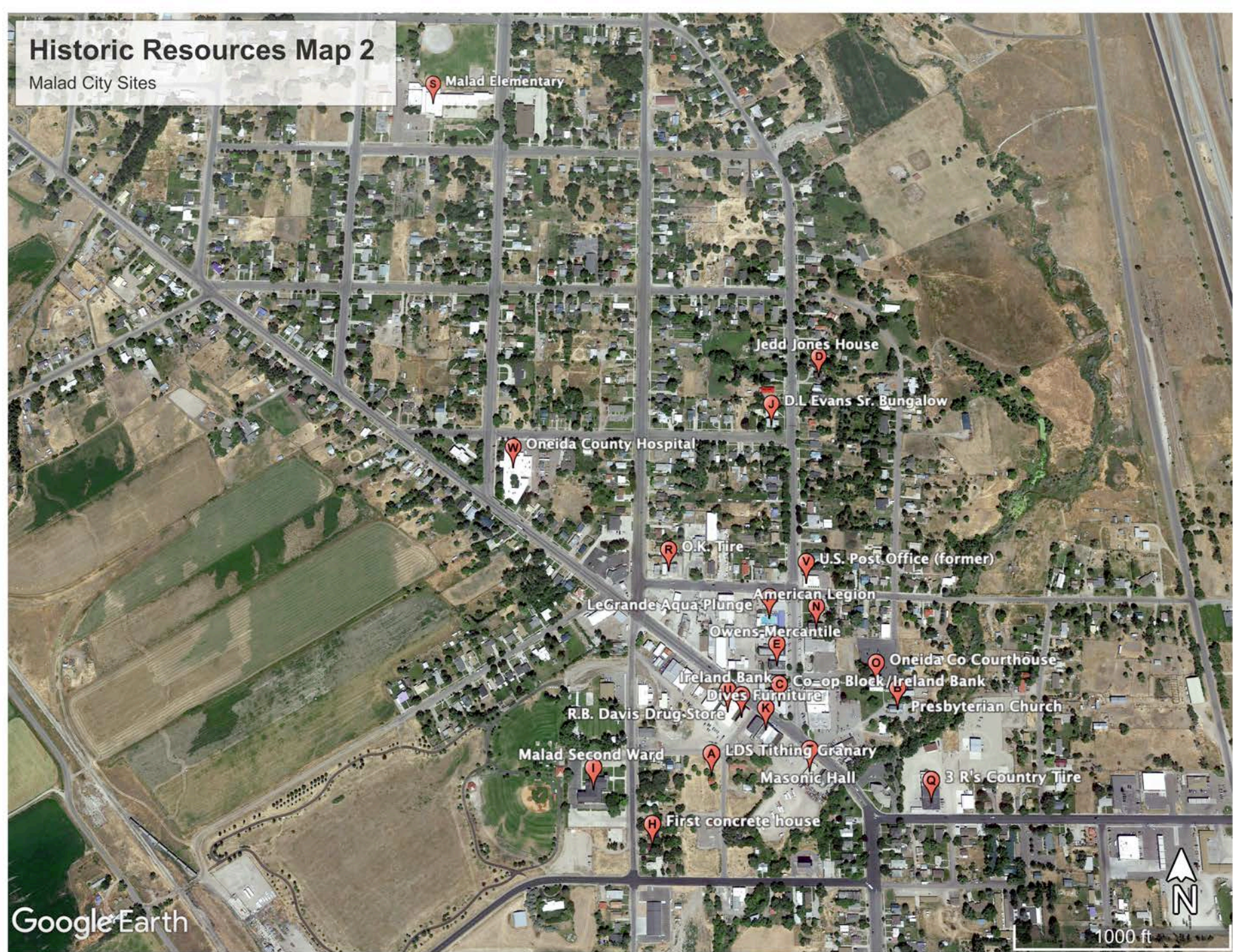


Google Earth

© 2021 Google

10 mi







# Oneida County Historic Preservation Plan

## VISION

- Historic places bring people back in time to learn what life was like in the past.
- History is personal.
- Places should be preserved for the next generation.
- Oneida County history is rooted most firmly in pioneer and Welsh stories although everyone's history is important and will be preserved.
- History connects people to their ancestors and to others who lived in the past and influenced the present.



Main Street in Malad, 1930 ca.



# Oneida County Historic Preservation Plan

## PLAN GOALS

- Start with a geographically-focused area
  - Malad City CBD
- Survey and Designate
  - NRHP includes 6 individual sites, 1 historic district
- Provide Information to the Public
  - Historic markers
- Allow the Ordinance to Lead
  - Potential to collect demolition information
  - Work on sites in public ownership



Evans Co-op and J.N. Ireland & Co. Bank, 1893/1907;  
NRHP 1979



# Oneida County Historic Preservation Plan

## KEY TAKEAWAYS

- Pioneer history needs to be a consistent focus
- Keeping the small town character is essential
- It's not too late
- There's a good foundation and community support to build upon



Attendees of the Malad Valley Welsh Festival tour historic cabins in Samaria.



# Oneida County Historic Preservation Plan

THANK YOU!

Final plan available at

<https://bit.ly/3AUuFoA>

**Kirk Huffaker**

Preservation Strategies

Salt Lake City, Utah

[kirk@kirkhuffaker.com](mailto:kirk@kirkhuffaker.com)

(801) 949-4040

[kirkhuffaker.com](http://kirkhuffaker.com)